

1st PART - B flat COR.,
 CLAR.
 SOLO BOOK - B flat COR.,
 B flat CLAR., T. SAX
 or BAR. T.C.

2
 1. ADESTE FIDELES
 (O Come, All Ye Faithful)

1st PART - Bb COR. or CLAR
 SOLO BOOK - Bb COR., Bb CLAR., T. SAX. or BAR. T.C.

JOHN READING

Maestoso



Musical notation for the first part of 'Adeste Fideles'. It consists of two staves of music in 4/4 time. The first staff starts with a treble clef and a key signature of one flat. The tempo is marked 'Maestoso'. There are rehearsal marks (1) and (5) indicated above the notes.

INTRO.

Musical notation for the introduction of 'Adeste Fideles'. It is a single staff of music in 4/4 time, starting with a bass clef. It includes rehearsal marks (13) and a star mark with (17) above it.

2. HARK! THE HERALD ANGELS SING

FELIX MENDELSSOHN

Con moto

Musical notation for the first part of 'Hark! The Herald Angels Sing'. It consists of two staves of music in 4/4 time, starting with a treble clef and a key signature of one flat. The tempo is marked 'Con moto'. There are rehearsal marks (1), (5), (9), and (13) indicated above the notes.

INTRO.

Musical notation for the introduction of 'Hark! The Herald Angels Sing'. It is a single staff of music in 4/4 time, starting with a bass clef. It includes rehearsal marks (17) and a star mark with (17) above it.



3. JOY TO THE WORLD

1st PART- Bb COR. or CLAR.

SOLO BOOK- Bb COR., Bb CLAR., T.SAX. or BAR. T.C.

G. F. HANDEL



Musical notation for 'Joy to the World' in 2/4 time, featuring a treble clef and a key signature of one flat. The piece includes a first line with measures (1) through (9), a second line with measures (13) through (17), and an 'INTRO.' section starting at measure 17.

4. SILENT NIGHT

FRANZ GRUBER

Cantabile

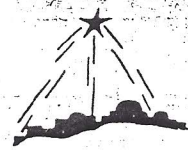
2nd time in

Musical notation for 'Silent Night' in 3/4 time, featuring a treble clef and a key signature of one flat. The piece includes a first line with measures (1) through (5), a second line with measures (9) through (13), and an '*INTRO.' section starting at measure 13.

5. O LITTLE TOWN OF BETHLEHEM

LEWIS H. REDNER

Musical notation for 'O Little Town of Bethlehem' in 4/4 time, featuring a treble clef and a key signature of one sharp. The piece includes a first line with measures (1) through (5), a second line with measures (9) through (13), and an 'INTRO.' section starting at measure 13.

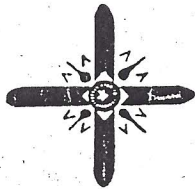


6. IT CAME UPON THE MIDNIGHT CLEAR

1st PART- Bb COR. or CLAR.

SOLO BOOK- Bb COR., Bb CLAR., T.SAX. or BAR. T.C.

RICHARD S. WILLIS



Musical notation for 'It Came Upon the Midnight Clear' in 4/4 time, featuring a treble clef and a key signature of one flat. The piece includes a first line with measures (1) through (5), a second line with measures (9) through (13), and an 'INTRO.' section starting at measure 13.

7. GOOD CHRISTIAN MEN, REJOICE
(In Dulci Jubilo)

Old German Melody

Musical notation for 'Good Christian Men, Rejoice' in 6/8 time, featuring a treble clef and a key signature of one sharp. The piece includes a first line with measures (1) through (5), a second line with measures (10) through (14), and an 'INTRO.' section starting at measure 14.

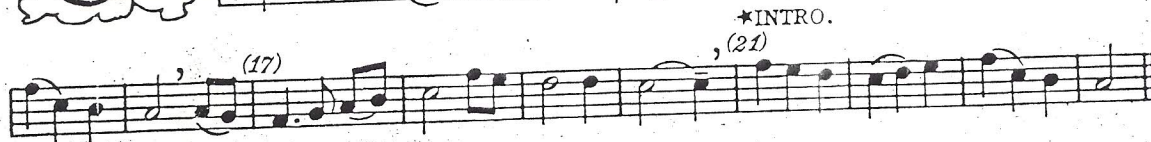


8. THE FIRST NOWELL

1st PART-B♭ COR. or CLAR.

SOLO BOOK-B♭ COR., B♭ CLAR., T. SAX. or BAR. T. C.

French-English



9. ANGELS WE HAVE HEARD ON HIGH

French-English



Legato

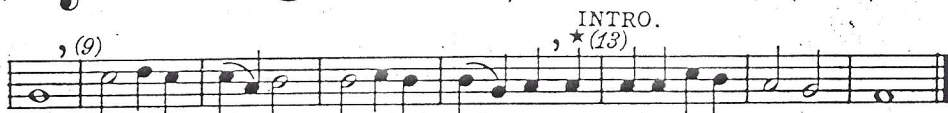
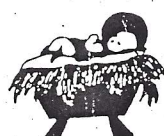
6

10. BEAUTIFUL SAVIOR

1st PART-B♭ COR. or CLAR.

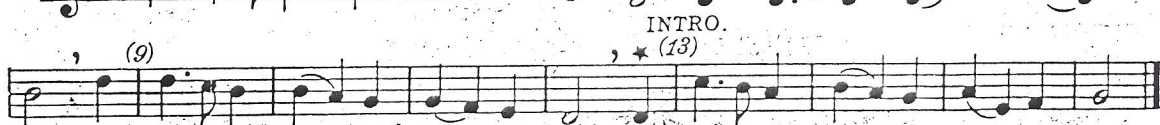
SOLO BOOK-B♭ COR., B♭ CLAR., T. SAX. or BAR. T. C.

12th Century Tune



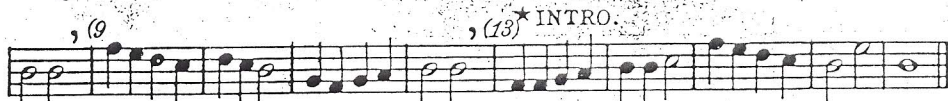
11. AWAY IN A MANGER

CARL MUELLER



12. GOOD KING WENCESLAS

Traditional



13. DECK THE HALLS

1st PART - Bb COR. or CLAR.

SOLO BOOK - Bb COR., Bb CLAR., T. SAX. or BAR. T. C.

Welsh Air



(1) (5) (9)

(13) *INTRO.

14. JINGLE BELLS

J. PIERPONT

(1) (5) (9) (13)

*INTRO. (17) (21)

1 2

15. O TANNENBAUM
(O Christmas Tree)

German Folk Tune

(1) (5) (9)

1 2

INTRO (13)




16. UP ON THE HOUSE-TOP

1st PART - Bb COR. or CLAR.

SOLO BOOK - Bb COR., Bb CLAR., T. SAX. or BAR. T. C.

B. R. HANBY



(1) (5) (9)

*INTRO. (13)

17. WE WISH YOU A MERRY CHRISTMAS

English Folk Song

(1) (5) (9)

INTRO. (13)

Fine

D.S. al Fine

18. JOLLY OLD SAINT NICHOLAS

Traditional

(1) (5) (9)

INTRO (13) *



19. WE THREE KINGS

1st PART-B♭ COR. or CLAR.

SOLO BOOK-B♭ COR., B♭ CLAR., T. SAX. or BAR. T. C.

J. H. HOPKINS



Musical notation for 'We Three Kings' with measures (1), (5), (9), (13), (17), (21), (25), (29) and a star intro.

20. GOD REST YOU MERRY, GENTLEMEN

English Air

Musical notation for 'God Rest You Merry, Gentlemen' with measures (1), (5), (9), (13), (17) and a star intro.

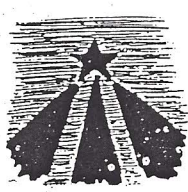


10 21. BREAK FORTH, O BEAUTEOUS HEAVENLY LIGHT

1st PART-B♭ COR. or CLAR. from "The Christmas Oratorio"

SOLO BOOK-B♭ COR., B♭ CLAR., T. SAX. or BAR. T. C.

J. S. BACH



Musical notation for 'Break Forth, O Beauteous Heavenly Light' with measures (1), (5), (9), (13), (17) and a star intro.

22. MERRY CHRISTMAS TIME

An Old Tune

Musical notation for 'Merry Christmas Time' with measures (1), (5), (9), (13), (17), (21), (25) and a star intro. Includes 'Fine' and 'D, S al Fine' markings.



23. A SONG FOR CHRISTMAS

1st PART- Bb COR. or CLAR.

SOLO BOOK- Bb COR., Bb CLAR., T. SAX. or BAR. T. C.

FORREST L BUCHTEL



(1)

(5) (9)

INTRO. * (13)

24. HOW GLAD I AM EACH CHRISTMAS EVE

Norwegian Carol

(1) (5) (9)

INTRO. * (5)

Fine

(13)

D. S. al Fine



25. THE FRIENDLY BEASTS

Traditional

1st PART- Bb COR. or CLAR.

SOLO BOOK- Bb COR., Bb CLAR., T. SAX. or BAR. T. C.



(1) (5)

INTRO. * (13)

26. WHILE SHEPHERDS WATCHED

JUNGST-TRACH

(1) *INTRO. (5) (9)

(13) (17) (21)

f *p* *f* *p* *rall*

27. WHILE SHEPHERDS WATCHED THEIR FLOCKS

Arr. from G. F. HANDEL

(1)

INTRO. * (9)

(5)



28. O COME, O COME IMMANUEL

1st PART-B♭ COR. or CLAR.

SOLO BOOK-B♭ COR., B♭ CLAR., T. SAX. or BAR. T. C.



13th Century Plain Song

(1) (4)

(7) (10)

(13) INTRO. ★ (17)

29. WHAT CHILD IS THIS

Old English Tune

(1) b (5) b

(9) b

(13) ★ INTRO.



30. LO, HOW A ROSE

1st PART-B♭ COR. or CLAR.

SOLO BOOK-B♭ COR., B♭ CLAR., T. SAX. or BAR. T. C.

M. PRAETORIOUS



(1) (6) ★ INTRO.

(11) (13) (16)

31. AS LATELY WE WATCHED

Austrian Carol

(1) (5)

(9) INTRO. ★ (13)

32. I HEARD THE BELLS ON CHRISTMAS DAY

J. B. CALKIN

(1) (5) ★ INTRO.



33. THE INFANT KING

1st PART - B♭ COR. or CLAR.

SOLO BOOK - B♭ COR., B♭ CLAR., T. SAX. or BAR. T. C.

Polish Carol



Musical notation for "The Infant King" in 3/4 time, key of G major. The score consists of three staves. The first staff starts with a treble clef and a key signature of one sharp (F#). It contains measures 1 through 5, with a "(Full tone)" instruction below measures 1-5 and an "(Echo)" instruction below measure 5. The second staff contains measures 6 through 9, with a "(Full tone)" instruction below measures 6-9 and an "(Echo)" instruction below measure 9. The third staff contains measures 10 through 15, with an "INTRO." above measure 10, a star symbol above measure 11, and an "(Echo)" instruction below measure 15.

34. SING SONGS OF JOY

Bohemian Carol

Musical notation for "Sing Songs of Joy" in 3/4 time, key of G major. The score consists of three staves. The first staff starts with a treble clef and a key signature of one sharp (F#). It contains measures 1 through 5, with a "(Full tone)" instruction below measures 1-5 and an "(Echo)" instruction below measure 5. The second staff contains measures 6 through 9, with a "(Full tone)" instruction below measures 6-9 and an "(Echo)" instruction below measure 9. The third staff contains measures 10 through 13, with a "★ INTRO." above measure 10 and an "(Echo)" instruction below measure 13. To the right of the third staff is a small illustration of a man in a tunic holding a book.

35. THE HOLLY AND THE IVY

1st PART - B♭ COR. or CLAR.

SOLO BOOK - B♭ COR., B♭ CLAR., T. SAX. or BAR. T. C.

English Carol



Musical notation for "The Holly and the Ivy" in 3/4 time, key of G major. The score consists of two staves. The first staff starts with a treble clef and a key signature of one sharp (F#). It contains measures 1 through 5, with a "(Full tone)" instruction below measures 1-5 and an "(Echo)" instruction below measure 5. The second staff contains measures 6 through 13, with an "INTRO." above measure 6, a star symbol above measure 7, and an "(Echo)" instruction below measure 13.

36. I SAW THREE SHIPS

Traditional

Musical notation for "I Saw Three Ships" in 6/8 time, key of G major. The score consists of two staves. The first staff starts with a treble clef and a key signature of one sharp (F#). It contains measures 1 through 5, with a "(Full tone)" instruction below measures 1-5 and an "(Echo)" instruction below measure 5. The second staff contains measures 6 through 13, with an "INTRO." above measure 6, a star symbol above measure 7, and an "(Echo)" instruction below measure 13.

37. COVENTRY CAROL

English Air

Musical notation for "Coventry Carol" in 3/4 time, key of G major. The score consists of two staves. The first staff starts with a treble clef and a key signature of one sharp (F#). It contains measures 1 through 5, with a "(Full tone)" instruction below measures 1-5 and an "(Echo)" instruction below measure 5. The second staff contains measures 6 through 13, with a "(Full tone)" instruction below measures 6-9 and an "(Echo)" instruction below measure 13.

