

2nd PART
B flat COR. or CLAR.

Christmas Time

Book of Carols

For Playing and Singing

Contents

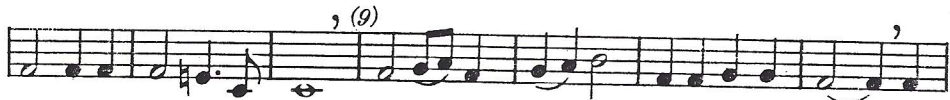
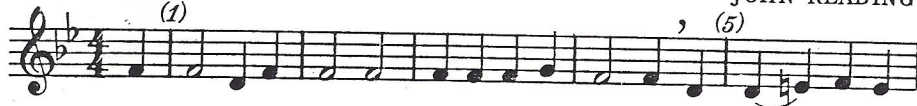
Title	Song No.	Title	Song No.
Adeste Fideles (O Come All Ye Faithful)	1	It Came Upon the Midnight Clear	6
Angeles We Have Heard on High	9	Jingle Bells	14
As Lately We Watched	31	Jolly Old Saint Nicholas	18
Away in a Manger	11	Joy to the World	3
Beautiful Savior	10	Lo, How a Rose	30
Break Forth, O Beauteous, Heavenly Light	21	Merry Christmas Time	22
Coventry Carol	37	O Christmas Tree (See "O Tannenbaum")	
Deck the Halls	13	O Come All Ye Faithful (See "Adeste Fideles")	
First Nowell, The	8	O Come, O Come Immanuel	28
Friendly Beasts, The	25	O Little Town of Bethlehem	5
God Rest You Merry, Gentlemen	20	O Tannenbaum (O Christmas Tree)	15
Good Christian Men Rejoice (In Dulci Jubilo)	7	Silent Night	4
Good King Wenceslas	12	Sing Songs of Joy	34
Hark, The Herald Angels Sing	2	Song for Christmas, A	23
Holly and the Ivy, The	35	Up on the House-Top	16
How Glad I am Each Christmas Eve	24	We Three Kings	19
I Heard the Bells on Christmas Day	32	We Wish You a Merry Christmas	17
In Dulci Jubilo (See "Good Christian Men Rejoice")	32	What Child is This	29
Little King, The	33	While Shepherds Watched (Jungst-Tkach)	26
I Saw Three Ships	36	While Shepherds Watched Their Flocks (Handel)	27

2nd PART - B \flat COR. or CLAR.

1. ADESTE FIDELES (O Come, All Ye Faithful)

JOHN READING

Maestoso
(1)



2. HARK! THE HERALD ANGELS SING

FELIX MENDELSSOHN

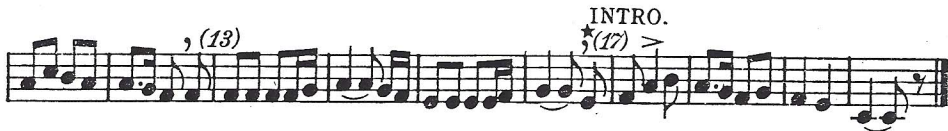
Con moto
(1)



3. JOY TO THE WORLD

2nd PART - B \flat COR. or CLAR.

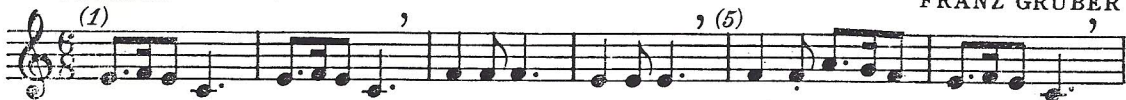
G. F. HANDEL



4. SILENT NIGHT

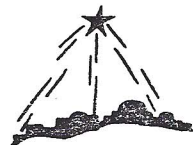
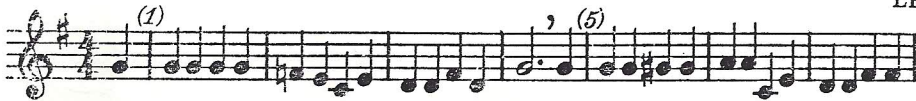
FRANZ GRUBER

Cantabile
(1)



5. O LITTLE TOWN OF BETHLEHEM

LEWIS H. REDNER



6. IT CAME UPON THE MIDNIGHT CLEAR

2nd PART - Bb COR. or CLAR.

RICHARD S. WILLIS



(1)

(5) (9)

INTRO. (13) *

7. GOOD CHRISTIAN MEN, REJOICE

(In Dulci Jubilo)

Old German Melody

(1) (5)

(10)

INTRO. (14) *



8. THE FIRST NOWELL

2nd PART - Bb COR. or CLAR.

Con moto

French-English



(1) (5)

(9)

INTRO. (17) (21) *

9. ANGELS WE HAVE HEARD ON HIGH

French-English

(2) (5)

(9) (15)

INTRO. (19) *



10. BEAUTIFUL SAVIOR

2nd PART - Bb COR. or CLAR.



(1) (5) 12th Century Tune

INTRO. (9) ★ (13)

11. AWAY IN A MANGER

CARL MUELIER

(1) (5)

INTRO. (9) ★ (13)

12. GOOD KING WENCESLAS

Traditional

(1) (5)

★INTRO. (9) (13)



13. DECK THE HALLS

2nd PART - Bb COR. or CLAR.



(1) (5) (9) Welsh Air

(13) ★INTRO.

14. JINGLE BELLS

J. PIERPONT

(1) (5)

(9) (13)

(17) (21) ★INTRO. 1 2 (9)

15. O TANNENBAUM (O Christmas Tree)

German Folk Tune

(1) (5)

INTRO. (9) ★ (13)



16. UP ON THE HOUSE-TOP

2nd PART - Bb COR. or CLAR.

B. R. HANBY



Musical notation for 'UP ON THE HOUSE-TOP'.

First staff: Treble clef, 4/4 time. Notes: G4, A4, B4, C5, B4, A4, G4, F4, E4, D4, C4. Rehearsal mark (1) at G4, (5) at C5.

Second staff: Treble clef, 4/4 time. Notes: G4, A4, B4, C5, B4, A4, G4, F4, E4, D4, C4. Rehearsal mark (9) at G4, (13) at C5. Marked 'INTRO.' with a star.

17 WE WISH YOU A MERRY CHRISTMAS

English Folk Song

Musical notation for 'WE WISH YOU A MERRY CHRISTMAS'.

First staff: Treble clef, 3/4 time. Notes: G4, A4, B4, C5, B4, A4, G4, F4, E4, D4, C4. Rehearsal mark (1) at G4, (5) at C5.

Second staff: Treble clef, 3/4 time. Notes: G4, A4, B4, C5, B4, A4, G4, F4, E4, D4, C4. Rehearsal mark (9) at G4, (13) at C5. Marked 'INTRO.' with a star. Ends with 'Fine' and 'D. S. al Fine'.

18. JOLLY OLD SAINT NICHOLAS

Traditional

Musical notation for 'JOLLY OLD SAINT NICHOLAS'.

First staff: Treble clef, 4/4 time. Notes: G4, A4, B4, C5, B4, A4, G4, F4, E4, D4, C4. Rehearsal mark (1) at G4, (5) at C5.

Second staff: Treble clef, 4/4 time. Notes: G4, A4, B4, C5, B4, A4, G4, F4, E4, D4, C4. Rehearsal mark (9) at G4, (13) at C5. Marked 'INTRO.' with a star.



19. WE THREE KINGS

2nd PART - Bb COR. or CLAR.

J. H. HOPKINS



Musical notation for 'WE THREE KINGS'.

First staff: Treble clef, 4/4 time. Notes: G4, A4, B4, C5, B4, A4, G4, F4, E4, D4, C4. Rehearsal mark (1) at G4, (5) at C5, (9) at G4.

Second staff: Treble clef, 4/4 time. Notes: G4, A4, B4, C5, B4, A4, G4, F4, E4, D4, C4. Rehearsal mark (13) at G4, (17) at C5.

Third staff: Treble clef, 4/4 time. Notes: G4, A4, B4, C5, B4, A4, G4, F4, E4, D4, C4. Rehearsal mark (21) at G4, (25) at C5, (29) at G4. Marked 'INTRO.' with a star.

20. GOD REST YOU MERRY, GENTLEMEN

English Air

Musical notation for 'GOD REST YOU MERRY, GENTLEMEN'.

First staff: Treble clef, 4/4 time. Notes: G4, A4, B4, C5, B4, A4, G4, F4, E4, D4, C4. Rehearsal mark (1) at G4, (5) at C5.

Second staff: Treble clef, 4/4 time. Notes: G4, A4, B4, C5, B4, A4, G4, F4, E4, D4, C4. Rehearsal mark (9) at G4, (13) at C5.

Third staff: Treble clef, 4/4 time. Notes: G4, A4, B4, C5, B4, A4, G4, F4, E4, D4, C4. Rehearsal mark (17) at G4. Marked 'INTRO.' with a star.



21. BREAK FORTH, O BEAUTEOUS HEAVENLY LIGHT

2nd PART- Bb COR. or CLAR.

from "The Christmas Oratorio"

J. S. BACH



Musical notation for "Break Forth, O Beauteous Heavenly Light" in G major, 4/4 time. The score consists of three staves. The first staff begins with a treble clef and a key signature of one sharp (F#). Measure numbers (1), (5), (9), and (13) are indicated. An asterisk and the word "INTRO." are placed above the final measure of the third staff.

22. MERRY CHRISTMAS TIME

An Old Tune

Musical notation for "Merry Christmas Time" in Bb major, 4/4 time. The score consists of three staves. The first staff begins with a treble clef and a key signature of two flats (Bb). Measure numbers (1), (5), (9), (13), (17), (21), and (25) are indicated. The word "Fine" is written below the end of the second staff. The word "D. S. al Fine" is written below the end of the third staff. An illustration of a man and a woman on horseback is located to the right of the third staff.

23. A SONG FOR CHRISTMAS

2nd PART- Bb COR. or CLAR.

FORREST L. BUCHEL



Musical notation for "A Song for Christmas" in G major, 6/8 time. The score consists of three staves. The first staff begins with a treble clef and a key signature of one sharp (F#). Measure numbers (1), (5), and (9) are indicated. The word "INTRO." is written above the first measure of the second staff, with an asterisk and the number (13) below it.

24. HOW GLAD I AM EACH CHRISTMAS EVE

Norwegian Carol

Musical notation for "How Glad I Am Each Christmas Eve" in Bb major, 6/8 time. The score consists of three staves. The first staff begins with a treble clef and a key signature of two flats (Bb). Measure numbers (1), (5), and (9) are indicated. The word "INTRO." is written above the first measure of the second staff, with an asterisk and the number (5) below it. The word "Fine" is written below the end of the second staff. The word "D. S. al Fine" is written below the end of the third staff. An illustration of a lit candle in a holder is located to the right of the third staff.

25. THE FRIENDLY BEASTS

2nd PART - Bb COR. or CLAR.



Traditional

(1) (5)

*INTRO.

(9) (13)

26. WHILE SHEPHERDS WATCHED

JUNGST-TKACH

(1) *INTRO. (5)

f (13)

p (17)

f (21)

rall.

27. WHILE SHEPHERDS WATCHED THEIR FLOCKS

Arr. from G. F. HANDEL

(1)

INTRO.

(5) * (9)



28. O COME, O COME IMMANUEL

13

2nd PART - Bb COR. or CLAR.



13th Century Plain Song

(1) (4)

(7) (10)

INTRO.

(13) * (17)

29. WHAT CHILD IS THIS

Old English Tune

(1) (5)

(9)

INTRO.

(13) *



2nd PART - B♭ COR. or CLAR.

PRAETORIOUS



Musical notation for "Lo, How A Rose" in 4/4 time, G major. The first staff starts at measure (1) and ends with a comma and "(6)*INTRO.". The second staff starts at measure (11) and ends with a comma and "(16)".

31. AS LATELY WE WATCHED

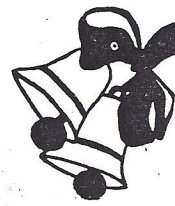
Austrian Carol

Musical notation for "As Lately We Watched" in 3/4 time, B♭ major. The first staff starts at measure (1) and ends with a comma and "(5)". The second staff starts at measure (9) and ends with a comma and "(13)", with "INTRO." written above it.

32. I HEARD THE BELLS ON CHRISTMAS DAY

J. B. CALKIN

Musical notation for "I Heard the Bells on Christmas Day" in 4/4 time, G major. The first staff starts at measure (1) and ends with a comma. The second staff starts at measure (5) and ends with a comma and "*INTRO.".



33. THE INFANT KING

2nd PART - B♭ COR. or CLAR.

Polish Carol



Musical notation for "The Infant King" in 3/4 time, G major. The first staff starts at measure (1) and ends with a comma and "(9)", with "(Full tone)" and "(Echo)" written below. The second staff starts at measure (5) and ends with a comma and "(13)", with "(Full tone)" written below. The third staff starts at measure (13) and ends with a comma and "(15)", with "INTRO." and "(Echo)" written above and below respectively.

34. SING SONGS OF JOY

Bohemian Carol

Musical notation for "Sing Songs of Joy" in 3/4 time, G major. The first staff starts at measure (1) and ends with a comma and "(5)", with "(Full tone)" and "(Echo)" written below. The second staff starts at measure (9) and ends with a comma, with "(Full tone)" written below. The third staff starts at measure (13) and ends with a comma and "*INTRO.", with "(Echo)" written below.



35. THE HOLLY AND THE IVY

2nd PART - B♭ COR. or CLAR.

English Carol



Musical notation for "The Holly and the Ivy". The first staff starts with a treble clef, a key signature of one sharp (F#), and a 3/4 time signature. It contains two measures of music, with a first ending bracket labeled (1) and a second ending bracket labeled (5). The second staff begins with an "INTRO." marked with a star and contains two measures of music, with a first ending bracket labeled (9) and a second ending bracket labeled (13).

36. I SAW THREE SHIPS.

Traditional

Musical notation for "I Saw Three Ships". The first staff starts with a treble clef, a key signature of one sharp (F#), and a 6/8 time signature. It contains two measures of music, with a first ending bracket labeled (1). The second staff begins with an "INTRO." marked with a star and contains two measures of music, with a first ending bracket labeled (5).

37. COVENTRY CAROL

English Air

Musical notation for "Coventry Carol". The first staff starts with a treble clef, a key signature of one sharp (F#), and a 3/4 time signature. It contains two measures of music, with a first ending bracket labeled (1) and a second ending bracket labeled (5). The second staff contains two measures of music, with a first ending bracket labeled (9) and a second ending bracket labeled (13).

